

COMPANY PROFILE

AMECON

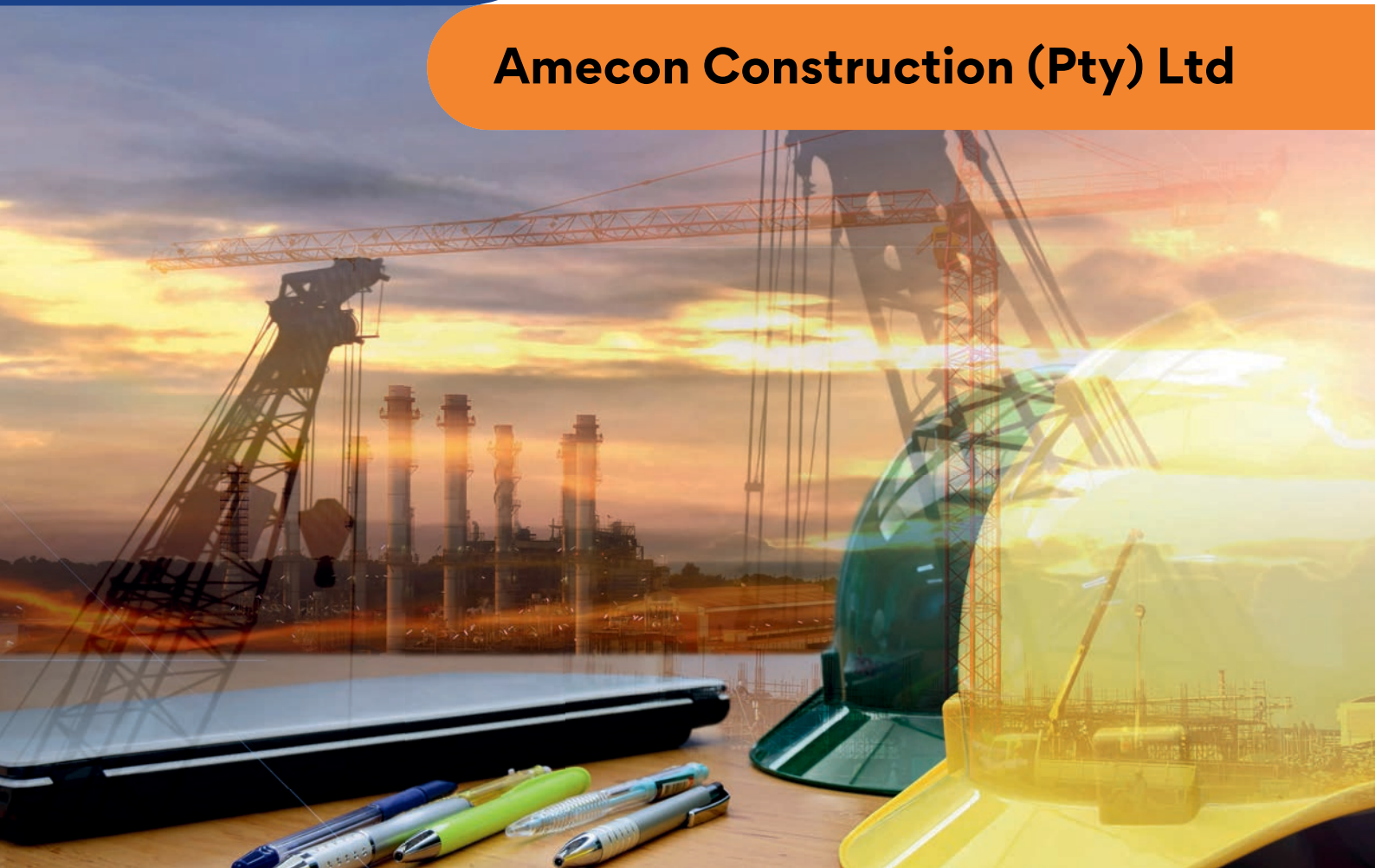
CONSTRUCTION (PTY) LTD

EXCELLENCE IN CONSTRUCTION

2025

Amecon Construction is a dynamic, multi-disciplinary construction and coating company, proudly serving both the commercial and residential sectors across Johannesburg and the greater Gauteng region. With a reputation built on quality, precision, and innovation, Amecon delivers excellence from the ground up.

Amecon Construction (Pty) Ltd





SHAPING SPACES WITH EXCELLENCE AND INTEGRITY

We offer a comprehensive range of services - from office refurbishments and commercial building conversions to high-quality residential construction. Every project we undertake is driven by a commitment to excellence and an unwavering pursuit of perfection.

Known for our professionalism, integrity, and superior workmanship, Amecon has earned the respect of clients and industry peers alike. We are dedicated not only to our craft but to the success of each project, the strength of our team, and above all, the satisfaction of our clients.

Amecon is proud to be a Level 1 B-BBEE contributor, actively supporting transformation and empowerment within South Africa's construction sector.

- **INTEGRITY**
- **HONESTY**
- **SERVICE**

MULTI-DISCIPLINE



CONSTRUCTION



COMMERCIAL COATINGS



WATERPROOFING AND DAMP PROOFING

Amecon Construction (Pty) Ltd operates across the construction, coating, waterproofing, and damp proofing sectors, delivering high-quality solutions with precision and care. As a proud member of the **National Home Builders Registration Council (NHBRC)**, we adhere to the highest industry standards. Every project we undertake is fully protected by our **Contractors All Risk Insurance Policy**, ensuring complete peace of mind for our clients. We pride ourselves on delivering superior workmanship, reliable professional advice, and competitive, market-related quotations. At Amecon, our ultimate goal is to earn and maintain the trust of every client - through service excellence, integrity, and consistent quality.

AREAS OF EXPERTISE



Commercial Building Conversions



Office Refurbishments



Whiteboxing



Residential Construction



Waterproofing & Damp Proofing



Specialised Coatings



Painting



Additions & Alterations



Electrical



Plumbing



Roofing (tiles & steel)



Bathroom Upgrades



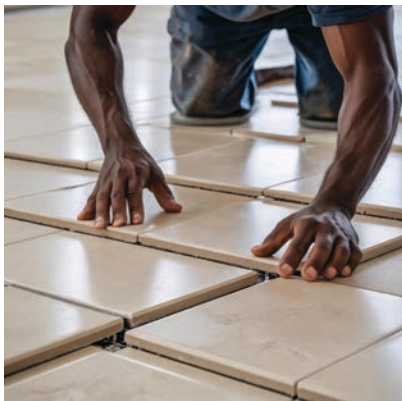
Carpentry



New Shopfronts



Paving



PRECISION THROUGH THERMAL TECHNOLOGY

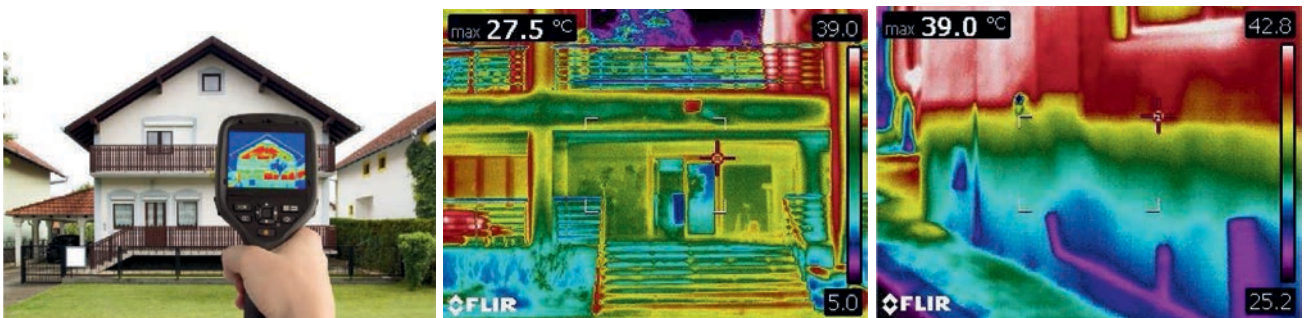
At Amecon, innovation is at the heart of everything we do. We continually embrace cutting-edge technology to stay at the forefront of our industry. One of our most powerful tools is the use of state-of-the-art thermal imaging cameras to inspect, identify, and monitor structural and moisture-related issues within buildings. Our inspections are conducted by **Level 1 ITC-accredited Thermographers**, ensuring accuracy and professionalism in every assessment. By using advanced thermal technology during site inspections, we are uniquely positioned to **detect the root cause of problems** — eliminating guesswork, saving valuable time, and reducing unnecessary costs for our clients.

In addition to on-site diagnostics, we also offer independent third-party inspections and comprehensive reporting.

Our areas of thermal inspection expertise include:

- Building moisture issues (rising and lateral damp)
- Roof waterproofing (especially flat concrete roofs)
- Thermal insulation performance
- Air leaks in shopfronts and glazed windows

With Amecon, you gain more than just a service — you gain insight, accuracy, and solutions that last.



SPECIALISED DAMP PROOFING SOLUTIONS FOR RESIDENTIAL & COMMERCIAL NEEDS

This dedicated division was established to meet the growing demand for advanced damp proofing treatments in both the residential and commercial sectors. We use scientifically tested application methods and source high-performance products from leading international suppliers to ensure long-lasting results.

Our Services Include:

- Thermal Imaging Inspections
- Rising & Lateral Damp Treatments
- Tanking Systems
- Concrete Roof Waterproofing
- Agricultural Drains
- Basement Sumps & Drainage Solutions

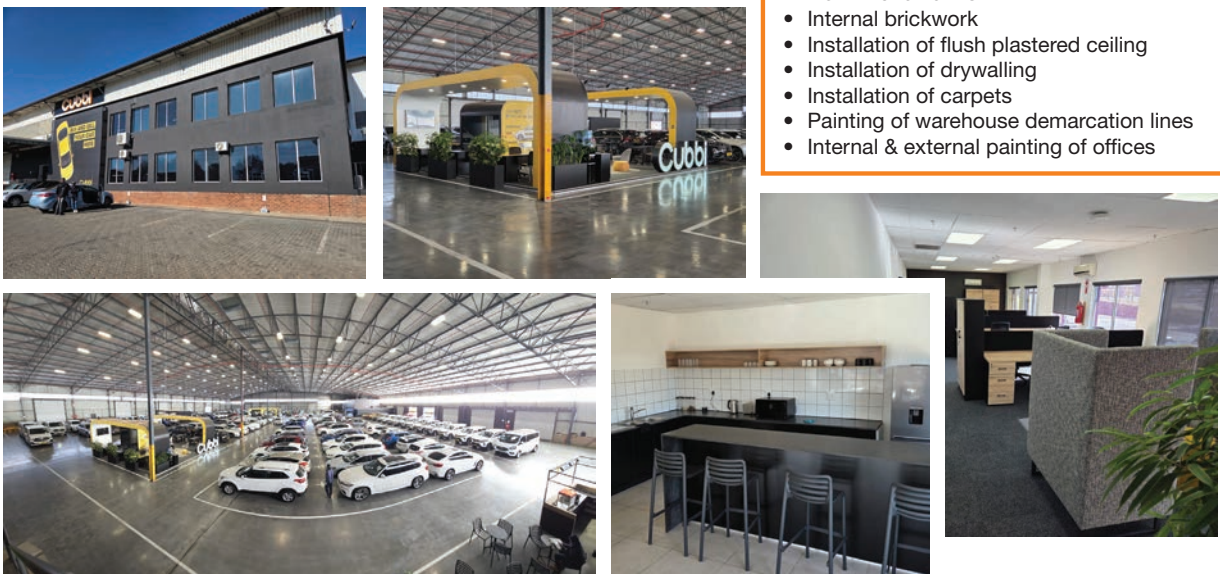
CONSTRUCTION PORTFOLIO

SANLAM PROPERTIES: Calverwall Park Warehouse 1, 2 & 3: Fire Compliance
Phase 1 Completed in 2024, Phase 2 completed in 2025



- Earthworks
- Construct circular reinforced concrete tank base ring beams to accommodate 2 x 604kl sectional galvanized steel tanks
- Construct Pumphouse

SANLAM PROPERTIES: Cubbi - Tenant Installation
Completed in 2025



- Installation of aluminum shopfronts
- Installation of aluminum doors & windows
- Plumbing installation
- Total bathroom refurbishment
- New kitchen units
- Internal brickwork
- Installation of flush plastered ceiling
- Installation of drywalling
- Installation of carpets
- Painting of warehouse demarcation lines
- Internal & external painting of offices

KEY PROJECTS OVER THE PAST 18 MONTHS

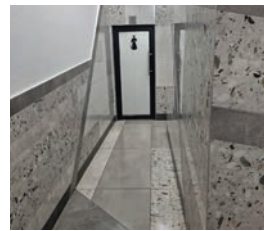


BUSINESS PARTNERS: Head Office External Upgrade Completed in 2025



- External painting of offices
- Waterproofing
- Painting of boundary wall & palisade fence
- Painting of basement parking & external parking demarcation lines
- Bird proofing

BUSINESS PARTNERS: Mooikloof Village External & Internal Upgrade Completed in 2025



- Demolition of brick walls
- Construct new brick walls
- Plastering
- Total bathroom refurbishment
- Plumbing installation
- Installation of flush plastered ceiling
- Installation of aluminum doors & windows
- Internal & external floor & wall tiling
- Electrical installations
- Paving on main entrance
- Re-leveling of paving in parking area
- Installation of flush plastered ceiling
- Painting of parking demarcation lines
- Waterproofing
- Joint sealing
- Internal & external painting of shopping centre
- Painting of boundary wall & palisade fence

REACH FOR A DREAM: Dr George Mukhari Academic Hospital - Construct New Dream Room - Pediatric Oncology Ward. Completed in 2025



- Earthworks
- Leveling & compaction of imported backfilling
- Casting of new concrete floors
- New brick work
- Plastering
- Installation of new doors & security gates
- Installation of flush plastered ceiling
- New electrical installations
- New HVAC
- Internal painting
- Mural painting
- Carpentry
- Vinyl flooring
- Artificial grass in outside play area
- Construct & install new Playhouse
- Installation of new Clearview fencing with gates

CORPORATE CLIENTS 



AMECON
CONSTRUCTION (PTY) LTD
 EXCELLENCE IN CONSTRUCTION

19, 3rd Street, Florida Glen, Johannesburg
 PO Box 475, Florida Hills, 1716
 Tel 010 016 6892
 Email admin@amecon.co.za
www.amecon.co.za

